



NEW SELECTION



GASTROBACK®

DESIGN CLASSIC + ADVANCED + PROFESSIONAL
EXPORT

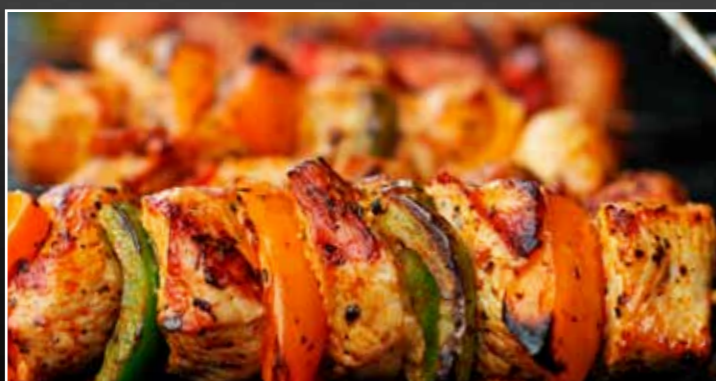
GASTROBACK®

DESIGN CLASSIC + ADVANCED + PROFESSIONAL

EXPORT



The company Gastroback was established in 1989 out of a little circle of specialists for commercial products, in the field of hotel, catering and restaurant. In the centre of our attention is an exceptional design, outstanding function, high quality materials, professional performance, quality workmanship and safety.



CONTENT

Espresso	3
Drip Coffee	4 - 5
Milk Froth	5 - 7
Breakfast	8 - 9
Drink Mixing	10
Ice Crushing	11 - 12
Juicing & Mixing	12 - 16
Cooking	16 - 17
Cooking & Frying	18
Barbecue	19
Raclette-Fondue & Baking	20
Baking	21 - 25
Hand Mixer	26
Foodprocessing	27 - 35
Vacuum Sealing	36 - 37
Cutting	38
Vacuum Cleaning	39

NEW



DESIGN ESPRESSO PLUS

- ✓ professional italian pump (Ulka / 15 bar)
- ✓ thermo block heating system for instant use
- ✓ pre-infusion
- ✓ ESE pad insert (Easy Serving Espresso)
- ✓ hot water function
- ✓ removable 1.7 liter water tank
- ✓ steam frother
- ✓ hot plate for coffee cups
- ✓ removable drip tray

- ✓ modern stainless steel design
- ✓ included accessories: dual wall filter for double and single cup, stainless steel milk jug, filter for ESE pad use, cleaning

Technical Details:

Art.-No. 42606
Dimensions: W x D x H: 206 x 270 x 325 mm
Performance: 220 - 230 V / 50 - 60 Hz / 1,250 W
Weight: 5.64 kg
Packaging Unit: 2 pcs

CLEANING TABLETS for all coffee- & espressomachines

Art.-No. 97830, content 12 pcs
 – removes grease, oil and coffee deposits
 – suitable for espresso coffee machines, coffee machines, filter coffee machines, vacuum flasks



DESCALER

Premium Descaler Art.-No. 98175, content e 500 ml
 For famous kitchen appliances such as espressomachines, coffee machines or water kettles. With 6 supportive and protective additives.



TESTMAGAZIN - URTEIL
Gastroback Design Coffee Aroma Plus 42703
SEHR GUT 92,0 %
19 Kaffeemaschinen im Vergleichstest Heft 01/2011

GASTROBACK®
ADVANCED PRODUKT



TESTURTEIL
Haus & Garten Test 2.2012
www.hausgarten-test.de

(2,2) gut
Gastroback Design Coffee Aroma Plus 42703
Aromatischer Kaffee mit guter Temperatur

DESIGN COFFEE AROMA PLUS

- ✓ design coffeemaker for 12 cups
- ✓ adjustable aroma setting – aroma button for extra-strong coffee
- ✓ aroma-development because of a gentle brewing process
- ✓ electronically controlled brewing
- ✓ 24 h switch-on timer function
- ✓ extra large controls
- ✓ illuminated LED display with digital clock
- ✓ warming function
- ✓ glass pot with aroma protection, water level indicator and ergonomic grip
- ✓ 1.7 litre water tank with water level indicator
- ✓ removable lock-in filter insert
- ✓ drip stop
- ✓ automatic shut-off
- ✓ 950 W power output

Technical Details:

Art.-No. 42703
Dimensions: W x D x H: 231 x 222 x 360 mm
Performance: 220 - 230 V / 50 - 60 Hz / 950 W
Weight: 2.7 kg
Packaging Unit: 4 pcs

DESIGN COFFEE AROMA PRO

- ✓ **NEW:** integrated water filter
- ✓ **NEW:** adjustable aroma setting – extra-strong coffee button
- ✓ **NEW:** long-life permanent goldfilter
- ✓ coffee maker for 12 cups
- ✓ programmable timer function
- ✓ large soft-touch operating menu, digital control system
- ✓ illuminated LCD display with digital clock
- ✓ keep-warm function with automatic cut-off
- ✓ glass pot with aroma protection, water level indicator and ergonomic grip
- ✓ 1.8 l water tank with water level indicator
- ✓ removable filter insert (filter size 1 x 4)
- ✓ aluminium diecast body
- ✓ drip-stop mechanism
- ✓ 1,000 watt capacity

Technical Details:

Art.-No. 42705
Dimensions: W x D x H: 225x 220 x 350 mm
Performance: 220 - 240 V / 50 - 60 Hz / 1,000 W
Weight: 3.97 kg
Packaging Unit: 2 pcs

TESTSIEGER EMPORIO URTEIL
Gastroback Automatischer Milchaufschäumer 42410
SEHR GUT 96,5 %
7 Milchaufschäumer im Vergleich Heft 10/2007

GASTROBACK®
ADVANCED PRODUKT



WITH WATERFILTER
integrated Waterfilter
simple replacement – protects against limescale, for perfect coffee flavour


WITH PERMANENT GOLDFILTER
Longlife-Permanent Filter
removable permanent goldfilter, no paper filters needed

AROMA-FUNCTION
Aroma adjustable
Choice of coffee strength between REGULAR and BOLD – with a keystroke

waterfilter & adapter

incl. recipe ideas

TESTMAGAZIN - URTEIL
Gastroback Design Advanced 42700
GUT 90,1 %
in Test: 14 Kaffeemaschinen Testurteil: 14x gut Heft 02/2012



DESIGN COFFEE ELECTRONIC

- ✓ design coffeemaker for 12 cups
- ✓ 24 h switch-on timer function
- ✓ freshness signal: indicates when the coffee has finished brewing
- ✓ 120 minutes warming function with warming plate
- ✓ illuminated buttons
- ✓ glass pot with aroma protection, water level indicator and ergonomic grip
- ✓ transparent 1.7 l water tank, including external water level indicator
- ✓ easy to remove filter insert
- ✓ drip stop
- ✓ illuminated LCD display with digital clock
- ✓ 950 watt power output

Technical Details:


Art.-No. 42700
Dimensions: W x D x H: 230 x 225 x 355 mm
Performance: 220 - 230 V / 50 - 60 Hz / 950 W
Weight: 2.7 kg
Packaging Unit: 4 pcs

AUTOMATIC MILK FROTHER (HEATED)

- ✓ produces approx. 1 litre of tasty foamed milk in only 3 minutes
- ✓ foam keeps for a long time
- ✓ fully automatic
- ✓ you can use milk with 0%, 1.5% or 3.5% fat
- ✓ no need to preheat the milk as heating element integrated
- ✓ patented foaming wings
- ✓ extensive recipe ideas included
- ✓ volume 1 litre
- ✓ easy to clean

Technical Details:

Art.-No. 42410
Dimensions: D x H: 190 x 267 mm
Performance: 230 V / 50 - 60 Hz / 500 W
Weight: 1.8 kg
Packaging Unit: 6 pcs

Milchaufschäumer
Gastroback Latte Magic
TECHNIK ZU HAUSE.de
Testsieger



warm & cold milk froth

NEW

Floating Froth with Spiral with magnetic drive mechanism extremely quiet!

also available in white colour

incl. recipe ideas

milk froth spiral removable warm or cold foam

LATTE MAGIC

- ✓ **NEW:** Floating milk froth spiral based on magnetic drive mechanism magnetic, removable milk froth spiral – functions without drive coupling
- ✓ **NEW:** Hot and cold milk froth in seconds (max. 350 ml)
- ✓ heating of milk or hot chocolate (max. 250 ml) – in-built heating function
- ✓ **NEW:** Extremely quiet
- ✓ freely rotatable through 360°
- ✓ automatic cut-off
- ✓ illuminated »Soft Touch« on/off switch
- ✓ non-stick coating
- ✓ easy to clean due to the removable spiral
- ✓ extensive recipe ideas included
- ✓ colours: available in black and white

Technical Details:

Art.-No. **42325 (white)**
42326 (black)

Dimensions: W x D x H: 155 x 120 x 200 mm
Performance: 220 - 240 V / 50 - 60 Hz / 420 - 500 W

Weight: 0.88 kg
Packaging Unit: 6 pcs

AUTOMATIC MILK FROTHER - MINI

- ✓ produces tasty foamed milk in only 3 minutes
- ✓ foam keeps for a long time
- ✓ fully automatic
- ✓ you can use milk with 0.3 - 3.9% fat
- ✓ no need to preheat the milk as heating element integrated
- ✓ special flavour hatch for adding syrup
- ✓ patented foaming wings
- ✓ glass pitcher
- ✓ extensive recipe ideas included
- ✓ easy to clean

Technical Details:

Art.-No. **42399**

Dimensions: W x H: 165 x 220 mm
Performance: 230 V / 50 - 60 Hz / 500 W
Weight: 1 kg
Packaging Unit: 8 pcs

Milchaufschäumer
Gastroback Mini
TECHNIK ZU HAUSE.de
gut - sehr gut



incl. recipe ideas




TESTURTEIL

Haus & Garten Test (1,4) **sehr gut**

Gastroback Easy Cino Plus

Im Test elektrische Milchaufschäumer der Oberklasse

Ideal für den schnellen, leckeren Milchschaum



incl. recipe ideas

NEW

magnetic drive system easy operation

EASY CINO PLUS MILK FROTHER

- ✓ produces about 300 ml of warm milk froth within a minute
- ✓ also suitable for heating milk or cocoa (max. 250 ml)
- ✓ milk with 0.3%, 1.5% or 3.5% fat may be used
- ✓ magnetic drive system
- ✓ integrated heating function
- ✓ double-walled »cool touch« stainless steel non-stick container
- ✓ timeless design in stainless steel, freely rotatable through 360°
- ✓ very low noise DC motor
- ✓ 380 watts of power, automatic disconnection
- ✓ accessories: 1 milk frother coil, 1 milk stirrer
- ✓ extensive recipe ideas included

Technical Details:

Art.-No. **42320**

Dimensions: W x D x H: 160 x 130 x 172 mm
Performance: 220 - 240 V / 50 - 60 Hz / 380 W
Revolutions: 3,500 rpm max.
Weight: 0.93 kg
Packaging Unit: 6 pcs



LATTE MAX MILK FROTHER (with mount)

- ✓ delicious milk froth in seconds
- ✓ ideal for latte macchiato, cappuccino, hot chocolate and milk shakes
- ✓ ergonomic cast metal housing
- ✓ strong motor
- ✓ light, handy and wireless

Technical Details:

Art.-No. **42219**

Dimensions: D x H: 50 x 215 mm
Revolutions: 16,000 rpm
Weight: 182 g
Packaging Unit: 16 pcs



LATTE PEN MILK FROTHER

- ✓ delicious milk froth in seconds
- ✓ ideal for latte macchiato, cappuccino, hot chocolate and milk shakes
- ✓ stainless steel housing
- ✓ strong motor
- ✓ light, handy and wireless

Technical Details:

Art.-No. **42215**

Dimensions: D x H: 20 x 205 mm
Revolutions: 16,000 rpm
Weight: 36 g
Packaging Unit: 48 pcs (2 display boxes á 24 pcs)

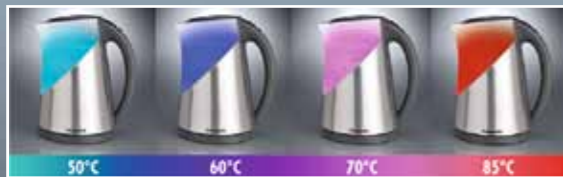


KETTLE COLOUR VISION

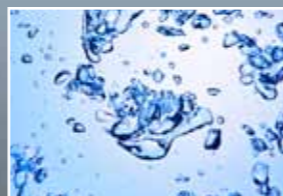
- ✓ optical colour temperature indicator: The appliance illuminates depending on the temperature of the water in different colours from blue to red.
- ✓ adjustable temperature
- ✓ digital temperature display
- ✓ multiple keep warm temperature selection (50 to 100 degrees Celsius)
- ✓ 2,400 W concealed heating element
- ✓ dry boil protection / safety shut-off
- ✓ 1,5 litres capacity and water level indicator
- ✓ easily removable lime filter
- ✓ cord storage

Technical Details:

Art.-No. 42420
 Dimensions: W x D x H: 150 x 190 x 250 mm
 Performance: 220 - 240 V / 50 - 60 Hz / 2,000 - 2,400 W
 Weight: 1.3 kg
 Packaging Unit: 4 pcs



temperature adjustable from 50 °C to 85 °C



~ PROFESSIONAL ~ ROWLETT STAINLESS STEEL TOASTER

- ✓ energy efficient rotary slot selector switch
- ✓ replaceable heating elements with fine-meshed protection
- ✓ indicator lamp
- ✓ mirror-polished stainless steel housing
- ✓ variable timer with »Toast Ready« ringer, manual lift
- ✓ removable crumb-tray
- ✓ easy cleaning due to smooth surfaces and rounded edges
- ✓ high equipment dependability and longevity



Technical Details:

Art.-No. 42002
 Slots: 2 toasts
 Output Pcs./h: 95 toasts
 Dimensions: W x D x H: 280 x 210 x 225 mm
 Performance: 220 - 240 V / 50 - 60 Hz / 1300 W
 Weight: 4.4 kg
 Packaging Unit: 1 pcs



Technical Details:

Art.-No. 42004
 Slots: 4 toasts
 Output Pcs./h: 195 toasts
 Dimensions: W x D x H: 370 x 210 x 225 mm
 Performance: 220 - 240 V / 50 - 60 Hz / 2300 W
 Weight: 6.4 kg
 Packaging Unit: 1 pcs



Technical Details:

Art.-No. 42006
 Slots: 6 toasts
 Output Pcs./h: 290 toasts
 Dimensions: W x D x H: 460 x 210 x 225 mm
 Performance: 220 - 240 V / 50 - 60 Hz / 3000 W
 Weight: 7.6 kg
 Packaging Unit: 1 pcs



Technical Details:

Art.-No. 42103
 Slots: 2 toasts /
 shaft with pliers for 1 sandwich
 Output Pcs./h: 95 toasts / 20 sandwiches
 Dimensions: W x D x H: 325 x 210 x 225 mm
 Performance: 220 - 240 V / 50 - 60 Hz / 1690 W
 Weight: 5.5 kg
 Packaging Unit: 1 pcs



Art.-No. 90000
 Accessories, bun warming rack
 for Art.-Nr. 42002, 42004 und 42103



DESIGN WATERKETTLE EXPRESS

- ✓ stainless steel bowl with 1.7 litres volume
- ✓ 3,000 W concealed heating element
- ✓ extremely fast
- ✓ automatic shut-off
- ✓ indicator light
- ✓ easy removable lime filter
- ✓ water level indicator
- ✓ cord storage

Technical Details:

Art.-No. 42415
 Dimensions: W x D x H: 165 x 235 x 256 mm
 Performance: 220 - 240 V / 50 - 60 Hz / 2,500 - 3,000 Watt
 Weight: 1.34 kg
 Packaging Unit: 6 pcs



DESIGN TOASTER BASIC

- ✓ modern cool touch design housing
- ✓ extra wide toast slots, also suitable for bagels or hamburger buns
- ✓ toast centering function
- ✓ variable, continuous browning control
- ✓ high-lift function, stop function, warming, thawing and bagel function for toasting one side only
- ✓ removable crumb tray and power cord storage
- ✓ bun warming attachment included

Technical Details:

Art.-No. 42401
 Dimensions: W x D x H: 275 x 239 x 185 mm
 Performance: 220 - 240 V / 50 - 60 Hz / 770 - 920 W
 Weight: 1.6 kg
 Packaging Unit: 4 pcs





~ PROFESSIONAL ~
DESIGN DRINK-MIXER

- ✓ heavy metal / die cast housing
- ✓ innovative design
- ✓ professional longlife motor with 350 watt
- ✓ 2 speed control with 18.000 and 20.000 rpm
- ✓ slide switch to start with the shaker edge
- ✓ also suitable for the use of glass and paper cups and different sizes
- ✓ including 0.8 litre stainless steel shaker

Technical Details:

Art.-No. 40172
 Dimensions: W x D x H: 180 x 245 x 460 mm
 Performance: 220 - 230 V / 50 - 60 Hz / 350 W
 Revolutions: 18.000 - 20.000 rpm
 Weight: 6.14 kg
 Packaging Unit: 1 pcs

2 adjustable speed levels



~ PROFESSIONAL ~
PROFESSIONAL ELECTRIC DESIGN
ICE CRUSHER

- ✓ modern design
- ✓ ideal ice splitter for drinks and cocktails
- ✓ fast and space saving
- ✓ safety feed opening with cover
- ✓ with integrated special catch receptacle
- ✓ produces about 40 kg crushed ice in an hour

Technical Details:

Art.-No. 41311
 Dimensions: W x D x H: 240 x 290 x 447 mm
 Performance: 220 - 240 V / 50 - 60 Hz / 100 W
 Weight: 8.2 kg
 Packaging Unit: 2 pcs

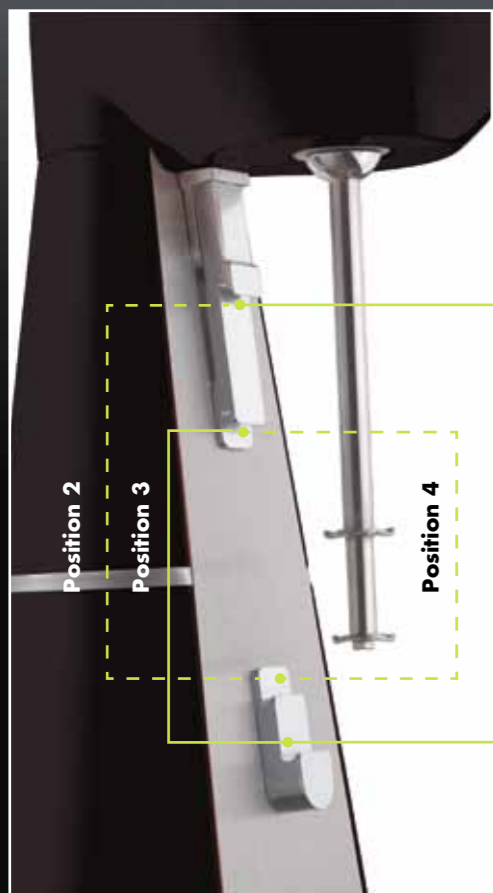


ELECTRICAL ICE CRUSHER

- ✓ produces ideal ice-splitters for preparation of drinks and cocktails
- ✓ fast – produces crushed ice in just 15 seconds
- ✓ space saving
- ✓ powerful electric-motor with 100 W
- ✓ safety interjection opening with cover
- ✓ chromed plastic housing
- ✓ special integrated ice container

Technical Details:

Art.-No. 41127
 Dimensions: W x D x H: 150 x 240 x 240 mm
 Performance: 220 - 230 V / 50 - 60 Hz / 100 W
 Weight: 1.9 kg
 Packaging Unit: 4 pcs



different cup sizes 11 to 18 cm usable





HAND ICE CRUSHER

- ✓ chromium-plated metal housing
- ✓ produces ideal ice-splitters for preparation of drinks and cocktails
- ✓ ice container with 1 litre volume
- ✓ claw-grinder with crank handle operation
- ✓ easy cleaning

Technical Details:

Art.-No. 41128
 Dimensions: W x D x H: 165 x 135 x 265 mm
 Weight: 2.4 kg
 Packaging Unit: 6 pcs



~ PROFESSIONAL ~ DESIGN CITRUS JUICER COMMERCIAL

- ✓ heavy metal / die cast housing
- ✓ innovative design
- ✓ professional longlife motor with 130 watt
- ✓ 2 press cones
- ✓ on/off switch
- ✓ stainless steel strainer

Technical Details:

Art.-No. 40174
 Dimensions: W x D x H: 218 x 300 x 330 mm
 Performance: 220 - 230 V / 50 - 60 Hz / 130 W
 Revolutions: 1,340 per minute
 Weight: 7 kg
 Packaging Unit: 1 pcs



VITAL JUICER PRO

- ✓ extra wide feed chute Ø 75 mm
- ✓ juicing whole apples, carrots and other fruit in seconds — no pre-cutting necessary
- ✓ 700 watt multi-motor
- ✓ stainless steel micro mesh filter basket for finest juices
- ✓ brushed stainless steel housing
- ✓ pulp container
- ✓ dishwasher safe
- ✓ incl. transparent juice box

Technical Details:

Art.-No. 40117
 Dimensions: W x D x H: 268 x 205 x 396 mm
 Performance: 230 V / 50 - 60 Hz / 700 W
 Revolutions: with load 12.000 per minute
 without load 17.000 - 18.500 per minute
 Weight: 3.2 kg
 Packaging Unit: 2 pcs



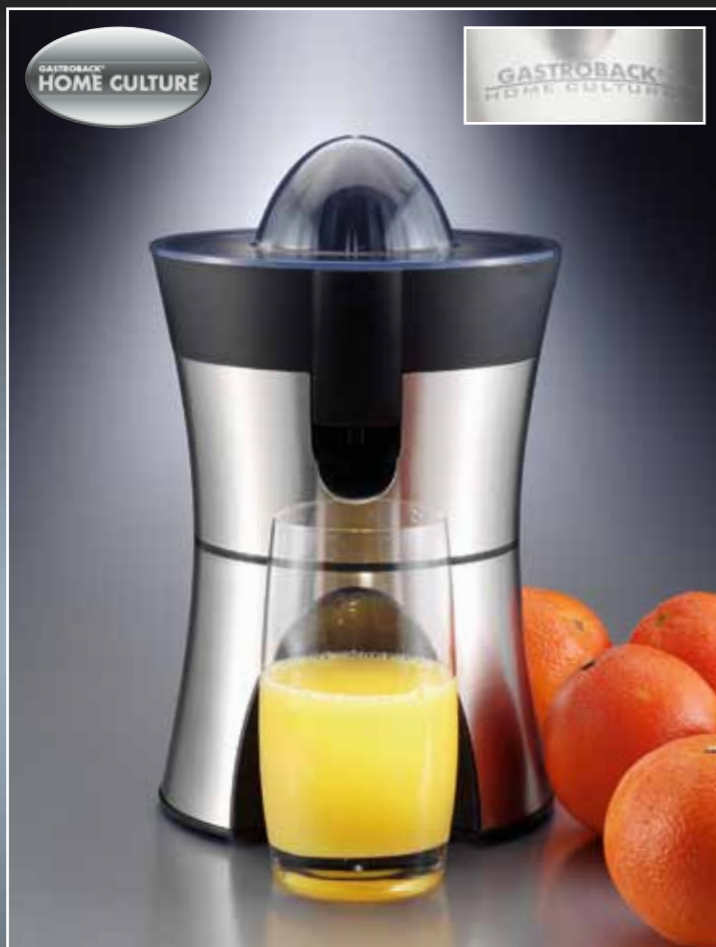
ELECTRIC CITRUS PRESS

- ✓ chrome-plated metal housing
- ✓ flower design
- ✓ two press cones with wing holder
- ✓ drip stop function — juice outlet can be folded up
- ✓ auto start function by pressing on the press cone
- ✓ included plastic cover
- ✓ easy cleaning

Technical Details:

Art.-No. 41124
 Dimensions: D x H: 170 x 210 mm
 Performance: 220 - 240 V / 50 - 60 Hz / 80 W
 Revolutions: 120 rpm
 Weight: 2.9 kg
 Packaging Unit: 6 pcs





CITRUS JUICER HOME CULTURE

- ✓ suitable for citrus fruits of all sizes
- ✓ 2 pressing cones
- ✓ drip stop function – juice outlet can be folded up
- ✓ auto start function by pressing on the press cone
- ✓ stainless steel strainer and juice spout
- ✓ including covering cap
- ✓ Inox Touch housing
- ✓ cable admission

Technical Details:

Art.-No. 41138
 Dimensions: D x H: 164 x 270 mm
 Performance: 220 - 240 V / 50 - 60 Hz / 100 W
 Revolutions: 110 rpm
 Weight: 1.82 kg
 Packaging Unit: 4 pcs



VITAL MIXER BASIC

- ✓ 600 watt
- ✓ detachable stainless steel 6-blade
- ✓ 5 speeds,
- ✓ ice crushing button and pulse function
- ✓ 1.5 litre glas jug
- ✓ safety interlock
- ✓ 2 oz Barlot lid
- ✓ ice crushing, puree, whisk, chop, shake and mix
- ✓ applications: crushing ice, fruit and fitness drinks, milk shakes, smoothies, cocktails, soups, salsa sauces and babyfood

Technical Details:

Art.-No. 40898
 Dimensions: W x D x H: 190 x 195 x 415 mm
 Performance: 220 - 240 V / 50 - 60 Hz / 600 W
 Revolutions: 18,000 - 21,000 per minute
 Weight: 3.4 kg
 Packaging Unit: 4 pcs



~ WARING PROFESSIONAL ~ CLASSIC BAR BLENDER WARING (USA)

Since 1946, this stylish Blender is made in his classic style. Many have tried to copy this blender, but could never reached its quality and function. The Bar Blender is a true allrounder. It is suitable for mixing drinks and cocktails as well as pureeing delicious soups. This blender masters the crushing of ice cubes effortlessly .

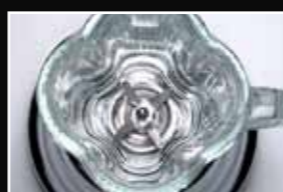
- ✓ hard chrome-plated metal housing
- ✓ 1 litre borosilicate glass jar / heat resistant
- ✓ jar in special patented clover blade design for professional blending performance
- ✓ 2 speed control
- ✓ strong forged stainless steel 4 blade set

Technical Details:

Art.-No. 40110
 Dimensions: W x D x H: 188 x 183 x 386 mm
 Performance: 220 V / 50 - 60 Hz / 350 W
 Revolutions: 16,000 - 22,000 per minute
 Weight: 4.3 kg
 Packaging Unit: 2 pcs

Replacement Bowl:

material borosilicate
Art.-No. 40211

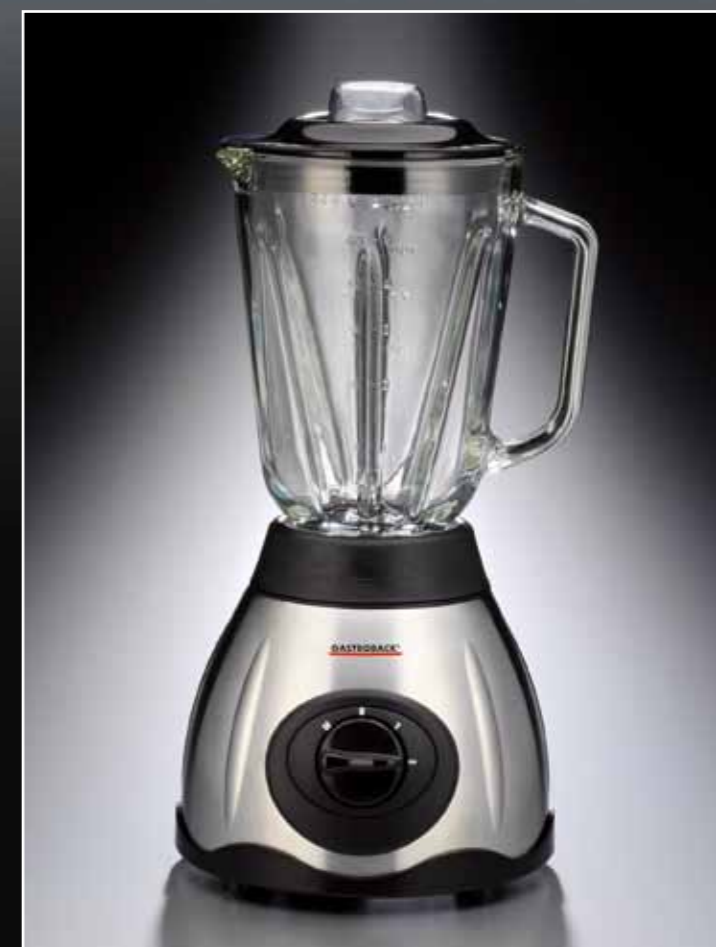


VITAL MIXER

- ✓ 500 watt
- ✓ detachable stainless steel 6-blade
- ✓ 2 speeds, pulse function
- ✓ 1,5 litre glas jug
- ✓ safety interlock
- ✓ 2 oz barlot lid
- ✓ Stainless Steel Design
- ✓ ice crushing, puree, whisk, chop, shake and mix
- ✓ applications: crushing ice, fruit and fitness drinks, milk shakes, smoothies, cocktails, soups, salsa sauces and babyfood

Technical Details:

Art.-No. 40998
 Dimensions: W x D x H: 175 x 185 x 395 mm
 Performance: 230 V / 50 - 60 Hz / 500 W
 Revolutions: 18,000 - 21,000 per minute
 Weight: 2.9 kg
 Packaging Unit: 4 pcs



NEW



Easy Control

3 programs
Ice Crush, Smoothie, Intervall
+ variable Mix Function

Mix Function

12 variable speed settings
(infinitely variable)

VITAL MIXER PRO

- ✓ **NEW:** 3 programs (ice crush, smoothie, pulse) for optimum mixing results
- ✓ **NEW:** Mix function: 12 variable speed settings (infinitely variable)
- ✓ **NEW:** illuminated control panel for easy operation
- ✓ uses: ice crushing, fruit and fitness drinks, milkshakes, smoothies, cocktails, soups, salsa sauces, spice pastes, minced meat, vegetable purée and baby food
- ✓ lid with integrated measuring cup and refill opening
- ✓ six-star stainless steel blades, removable
- ✓ 1.75 litre glass jug with scale, heat and cold resistant
- ✓ sturdy stainless steel housing
- ✓ powerful 1000 W motor
- ✓ mounted parts dishwasher safe
- ✓ including recipe ideas

Technical Details:

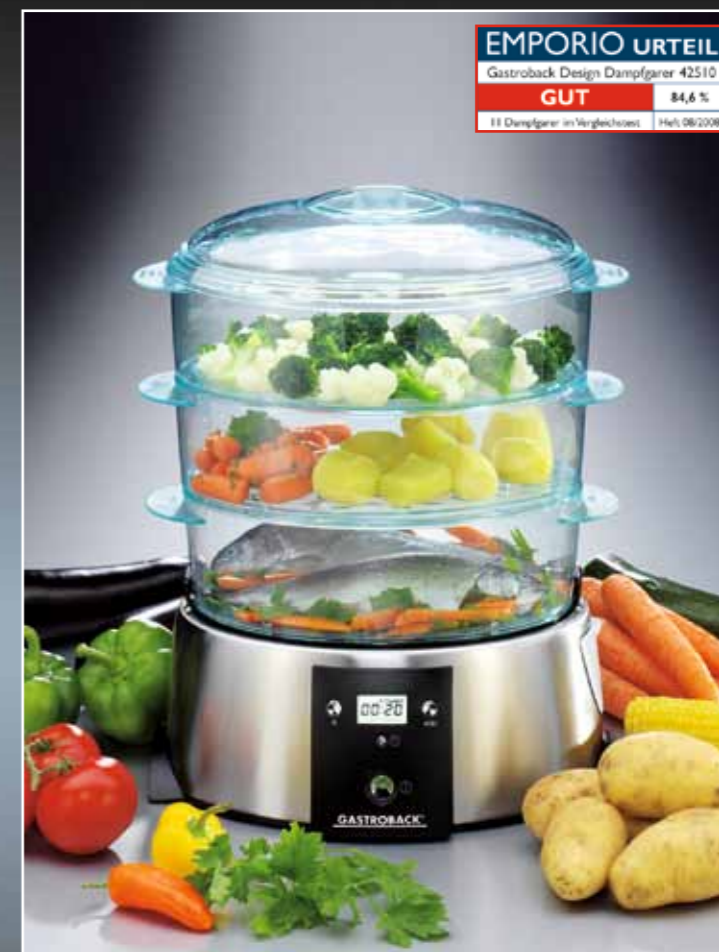
Art.-No. 40986
 Dimensions: W x D x H: 430 x 181 x 231 mm
 Performance: 220 - 240 V / 50 - 60 Hz / 1,000 W
 Revolutions: 3,900 - 20,000 per minute
 Weight: 4.19 kg
 Packaging Unit: 4 pcs

DESIGN FOOD STEAMER

- ✓ ideal for carefully cooking of vegetables, rice, fish and meat
- ✓ natural ingredients, minerals and vitamins are preserved
- ✓ LCD display with hour and minute indicator
- ✓ timer with up to 2 hours cooking time
- ✓ 1 hour hotplate function
- ✓ automatic stop function
- ✓ control lamp
- ✓ water level indicator
- ✓ Accessories: 3 transparent steam baskets (each 3 l volume) with removable bottoms, rice dish and lid

Technical Details:

Art.-No. 42510
 Dimensions: W x D x H: 340 x 252 x 396 mm
 Performance: 230 V / 50 - 60 Hz / 650 W
 Weight: 2.5 kg
 Packaging Unit: 2 pcs



EMPORIO URTEIL
 Gastroback Design Dampfgarer 42510
GUT 84,6 %
 11 Dampfgarer im Vergleich: Heft 08/2008

NEW



GASTROBACK®
 ADVANCED PRODUKT

CRUSHED ICE

LED timer, 3 temperature settings

integrated measuring cup & refill opening

non-stick hot plate, 6 stainless steel blades

incl. recipe ideas

✓ MIXING
 ✓ COOKING
 ✓ STIRRING
 cold & warm dishes

COOK & MIX PLUS

- ✓ automatic mix-cook system with a host of different functions
- ✓ Cook & Mix applications: Creamy soups, sauces & dips, baby food, fruit dishes & marmalade, pudding & crèmes
- ✓ Mix applications: refreshing fruit drinks / smoothies, drinks & cocktails, milkshakes, sorbets, iced drinks, crushed ice
- ✓ cook, poach, mix, blend, emulsify, whip, chop, pulverise, crushing ice and blending shakes made easy
- ✓ 4 speed settings and pulse function
- ✓ 3 temperature settings to select the cooking temperature
- ✓ LED timer for precise pre-setting of the cooking time
- ✓ 1.75 litre borosilicate glass container with scaling
- ✓ non-stick hot plate
- ✓ 6 stainless steel blades
- ✓ automatic warming function
- ✓ high-performance 1,200 watt heating power
- ✓ lid with integrated measuring beaker and filler opening

Technical Details:

Art.-No. 41020
 Dimensions: W x D x H: 230 x 184 x 453 mm
 Performance: 220 - 240 V / 50 - 60 Hz / 1,200 W
 Revolutions: 13,000 - 20,000 per minute
 Weight: 5.5 kg
 Packaging Unit: 2 pcs

DESIGN RICE COOKER / DESIGN RICE COOKER PRO

- ✓ automatic preparation of rice: no overcooking and no burning off
- ✓ the natural contents of minerals and vitamins are retained
- ✓ automatic switch-off, heat-retaining function and pilot light.
- ✓ 3 / 5 litre capacity (max.)
- ✓ 450 / 700 Watt Leistung
- ✓ non-stick coating internally
- ✓ included accessories: sieve insert, rice spoon and a beaker to measure the amount of rice
- ✓ uses: cooking rice, porridge and steaming vegetables or keeping soup warm

Technical Details:

Art.-No.	42507	42518
Design Rice Cooker		Design Rice Cooker Pro
Volume:	3 litre	5 litre
Dimensions: W x D x H:	272 x 250 x 240 mm	311 x 289 x 284 mm
Performance:	220 - 240 V / 50-60 Hz 450 W	220 - 240 V / 50-60 Hz 700 W
Weight:	3.2 kg	4.1 kg
Packaging Unit:	2 pcs	2 pcs



TESTSIEGER
 ETW TESTMAGAZIN - URTEIL
 GASTROBACK Design Reiskocher Pro
SEHR GUT 92,7 %
 im Test: 7 Reiskocher
 Testurteile: 1x sehr gut, 6x gut Heft 12/2012



DESIGN MULTICOOK PLUS

- ✓ **NEW:** ALL IN ONE – multi cooker, steam cooker, slow cooker, deep fryer, rice cooker and yoghurt maker in one
- ✓ 20 different programs with many settings such as: rice, baking, stewing, steaming, fast-cooking, pasta, frying, soups, porridge, yogurt, jam
- ✓ ideal for versatile and healthy cuisine
- ✓ automatic cooking
- ✓ large, blue backlit LED display with touch sensor - keys for an intuitive operation
- ✓ removable 5 liter container with non-stick coating
- ✓ 24 hours keep warm and timer function
- ✓ modern design with convenient carrying handle
- ✓ included accessories: steamer insert, measuring cup, ladle, serving spoon, Frying basket, yoghurt use with 6 cups

Technical Details:

Art.-No. 42526
Dimensions: W x D x H: 320 x 395 x 240 mm
Performance: 230 V / 50 - 60 Hz / 950 W
Capacity: 5 litre
Weight: 4.49 kg
Packaging Unit: 2 pcs

TEPPANYAKI GLAS-BARBECUE ADVANCED

- ✓ prepare Japanese-style dishes right at the table
- ✓ fast and vitamin-friendly cooking of seafood, fish, vegetables, meat or Asian fried noodles
- ✓ also ideal for pancakes, omelets, potato fritters and fried potatoes
- ✓ healthy barbecue without fat
- ✓ temperature range from 60 °C to 300 °C
- ✓ also suitable for plancha barbecue
- ✓ two separately adjustable barbecue zones (barbecue area 165 x 250 mm) and one warming zone for simultaneous cooking of different foods at different temperatures
- ✓ 6-level touch-screen LED temperature control
- ✓ removable ceramic glass grill plate with extra durable cutting surface; dishwasher safe
- ✓ integrated grease drip tray and removable splash guard
- ✓ accessories include 2 stainless steel spatulas and splash guard

Technical Details:

Art.-No. 42535
Dimensions: W x D x H: 610 x 340 x 128 mm
Performance: 220 - 240 V / 50 - 60 Hz / 1,280 W (2 x 640 W)
Weight: 5.65 kg
Packaging Unit: 1 pcs



removable ceramic glass grill plate



6-level touch-screen temperature control



incl. 2 spatulas



VITA-SPIN-FRYER

- ✓ **NEW:** With rotation - up to 55% less fat in comparison with conventional deep fryers
- ✓ rotation with 2 speeds, also suitable for deep-frying especially delicate foods
- ✓ speed setting and timer with indicator light
- ✓ variable adjustable 2000 watt high-performance thermostat for gentle frying
- ✓ basket-lift function for easy removal
- ✓ lid with window and push-button for easy opening
- ✓ removable 2.5 liter oil tank with non-stick coating
- ✓ immersion heater
- ✓ deep-fry timer with indicator light
- ✓ safety shut-off

Technical Details:

Art.-No. 42580
Dimensions: W x D x H: 255 x 350 x 255 mm
Performance: 230 V / 50 - 60 Hz / 2,000 W
Capacity: 2.3 litre
Weight: 4.65 kg
Packaging Unit: 1 pcs



DESIGN TABLE-BARBECUE ADVANCED

- ✓ professional design table barbecue with exchangeable barbecue plates and integrated barbecue thermometer – For perfect barbecue results every time. Ideal for your barbecue party at home!
- ✓ versatile in application:
 - smooth barbecue plate: Ideal for browning meat, fish and vegetables; also suitable for pancakes, omelets, potato fritters, fried potatoes, etc.
 - barbecue grate with special ribbed barbecue surface: Separates fat from meat during cooking and creates fine barbecue marks
- ✓ healthy contact barbecue without fat
- ✓ 2 barbecue plates included (1 barbecue grate and 1 smooth plate), extra large barbecue surface: 30 x 41 cm, with non-stick coating
- ✓ digitally adjustable grill temperature up to ca. 230°C and illuminated LCD display with indicator lights
- ✓ removable grease drip tray
- ✓ accessories: barbecue thermometer, glass lid, barbecue grate and additional barbecue plate

Technical Details:

Art.-No. 42530
Dimensions: W x D x H: 555 x 403 x 173 mm
Performance: 230 V / 50 - 60 Hz
 grill grate: 2,000 Watt
 smooth plate: 1,600 Watt
Weight: 7.65 kg
Packaging Unit: 1 pcs



barbecue thermometer



exchangeable barbecue plates





DESIGN RACLETTE-FONDUE-SET

- ✓ raclette grill with fondue pot - for separate or combined use
- ✓ ideal for grilling, cooking »au gratin«
- ✓ for cheese-, meat- and chocolate fondue
- ✓ 2 - 6 person raclette grill
- ✓ non-stick coating raclette dishes with heat-insulated plastic handles
- ✓ non-stick coating removable grill plates
- ✓ on / off switch
- ✓ Variable temperature control
- ✓ Accessories: 6 raclette dishes, 6 spatulas, 6 fondue forks

Technical Details:

Art.-No. 42559
 Dimensions: W x D x H: 320 x 320 x 215 mm
 Performance: 230 V / 50 - 60 Hz / 1,400 W
 Weight: 3.4 kg
 Packaging Unit: 4 pcs



DESIGN SANDWICH PRO

- ✓ XXL sandwiches – suitable for large and small toast slices
- ✓ double toast form: for 4 crispy sandwiches
- ✓ ingredients are sealed between the slices, with break line
- ✓ grill surfaces feature non-stick coating for low-fat preparation and easy cleaning
- ✓ top and bottom heat
- ✓ 850 watt heating power
- ✓ modern stainless steel design
- ✓ handles are recessed for safe and convenient use
- ✓ two indicator lights

Technical Details:

Art.-No. 42433
 Dimensions: W x D x H: 230 x 225 x 90 mm
 Performance: 230 V / 50 - 60 Hz / 850 W
 Weight: 1.7 kg
 Packaging Unit: 6 pcs



double toast form with non-stick coating

two indicator lights for power and temperature



lockable clip handle with recess

DESIGN BISTRO OVEN ADVANCED PRO

- ✓ electronically controlled multi-function oven
- ✓ 8 programs: ideal for toasting, baking, roasting, grilling and defrosting – Very fast and convenient preparation of pizza, casseroles, French fries, bread, cakes, biscuits, meat or fish dishes
- ✓ 4 functions: top heat, bottom heat, top and bottom heat, fan
- ✓ with electronically controlled parental control
- ✓ backlit LCD display - displays the 8 programs and 4 functions, as well as the baking time and number of degrees
- ✓ two shelf levels for different dishes and quantities
- ✓ continuously variable temperature setting 90 °C to 230 °C
- ✓ timer to 99 minutes with automatic shutoff and indicator light
- ✓ non-stick coated interior and metal housing
- ✓ included accessories: grill grate and non-stick baking sheet with a separate handle to conveniently remove, removable crumb tray

Technical Details:

Art.-No. 42813
 Dimensions: W x D x H: 510 x 350 x 305 mm
 Performance: 230 - 240 V / 50 - 60 Hz / 580 W
 Interior Volume: 28 l
 Weight: 9.7 kg
 Packaging Unit: 1 pcs



various applications:



DESIGN BREAD MAKER PLUS

- ✓ bread maker equipped with 13 programs for bread, pastry, marmalade and yoghurt
- ✓ self-baked bread loaves up to 750 gram – ideal for a balanced and healthy nutrition
- ✓ for whole meal bread, French bread or sweet bread variants – adequate also for gluten-free baking and cakes
- ✓ additional pastry program to bake pasta, pizza and panini pastry, bagel or biscuits
- ✓ bread baking pan with non-stick coating and extractable kneading hook
- ✓ 3 browning levels
- ✓ viewing window to check the baking process
- ✓ marmalade program for self-made jam, marmalade and jelly
- ✓ yoghurt program
- ✓ start-up timer (13 hours) for daily fresh bread
- ✓ warming function (60 minutes) for freshly baked bread
- ✓ easy cleaning
- ✓ including recipe ideas, yoghurt box, measuring cup and measuring spoon

Technical Details:

Art.-No. 42820
 Dimensions: W x D x H: 255 x 350 x 275 mm
 Performance: 230 - 240 V / 50 - 60 Hz / 580 W
 Weight: 5.2 kg
 Packaging Unit: 2 pcs



incl. recipe ideas



bread and dough programs



jam-program



NEW: yoghurt-program





DESIGN WAFFLEMAKER ADVANCED EL

- ✓ perfect preparation of delicious Belgian waffles
- ✓ XXL-waffles with 50% more volume
- ✓ heavy metal housing with rotating device for equally and accurate spreading of the batter
- ✓ integrated heating elements for accurate temperature control
- ✓ easy handling through LED display
- ✓ browning- and crisp degree simply adjustable - each waffle succeeds -
- ✓ 950 W high-performance motor
- ✓ low-fat backing - double non-stick coating
- ✓ acoustic signal
- ✓ cool-touch handle / drip tray

Technical Details:

Art.-No. 42419
Dimensions: W x D x H: 235 x 405 x 190 mm
Performance: 220 - 240 V / 50 - 60 Hz / 950 W
Weight: 5 kg
Packaging Unit: 2 pcs



with unique rotary function for XXL waffles with 50% more volume



DESIGN CRÊPE MAKER PRO

- ✓ quickly and easily perfect crepes using the patented batter spreader
- ✓ Ø 33 cm working plate with non-stick coating
- ✓ chromed ring
- ✓ thermostat controlled
- ✓ indicator light
- ✓ included accessories: patented batter spreader, measure ladle, spatula, rake, brush, water container to clean the spreader and recipes

Technical Details:

Art.-No. 44005
Dimensions: Ø x H: 330 x 115 mm
Performance: 230 - 240 V / 50 - 60 Hz / 1,250 W
Weight: 2.8 kg
Packaging Unit: 6 pcs



patented batter spreader – optimal spreading of the dough for perfect pancakes



DESIGN WAFFLE MAKER PRO

- ✓ modern glass design
- ✓ twin-cake pan: 2 waffles at a time
- ✓ especially soft and airy waffles (Ø155mm)
- ✓ upper and lower heat for a perfect heat conduction
- ✓ variable temperature control
- ✓ handles with cavity for safe and comfortable handling
- ✓ non-stick-coating for fat free preparation and easy cleaning
- ✓ 2 control lamps

Technical Details:

Art.-No. 42405
Dimensions: W x D x H: 350 x 270 x 105 mm
Performance: 220 - 240 V / 50 - 60 Hz / 1,100 - 1,300 W
Weight: 3.2 kg
Packaging Unit: 4 pcs



SMALL CRÊPE-MAKER

- ✓ working plate with diameter of 310 mm, non-stick coating
- ✓ thermostat controlled
- ✓ Accessories: dough pusher, measured ladle, crepe-turner and recipes

Technical Details:

Art.-No. 44210
Dimensions: Ø x H: 310 x 100 mm
Performance: 220 V / 50 - 60 Hz / 1,100 W
Weight: 1.8 kg
Packaging Unit: 6 pcs



GASTROBACK®
ADVANCED PRODUKT



planetary mixer:
for an even and thorough mixing
of the ingredients

DESIGN STAND MIXER ADVANCED

- ✓ this appliance can be used in various ways: whisking egg whites, cream, instant pudding, cake dough, yeast dough or folding ingredients carefully into dough
- ✓ planetary mixer
- ✓ speed control with 10 levels and "Off" switch
- ✓ easy and convenient handling
- ✓ high performance 800 watt motor
- ✓ heavy metal housing
- ✓ included in delivery: stainless steel bowl (6 litre), splash guard

- ✓ with feed opening, stainless steel whisker, heavy metal dough hook and metal beater
- ✓ motor head release lever

Technical Details:

Art.-No. 40969
Dimensions: W x D x H: 418 x 243 x 380 mm
Performance: 230 V / 50 - 60 Hz / 800 W
Revolutions: 52 - 215 per minute
Weight: 9.9 kg
Packaging Unit: 1 pcs



accessories included: whisk, dough hook and whisk

ACCESSORIES FOR DESIGN STAND MIXER ADVANCED 40969

PASTA ATTACHMENT

- ✓ to make pasta e.g. spaghetti, tagliatelle, lasagne, rigatoni, macaroni
- ✓ easy assembly of the attachment to the stand mixer
- ✓ feed screw with metal pin and coupling
- ✓ accessories: 6 different pasta attachments, spanner, measuring cup and cleaning tool

Technical Details:

Art.-No. 98100
Dimensions: W x D x H: 100 x 163 x 182 mm
Weight: 0.59 kg

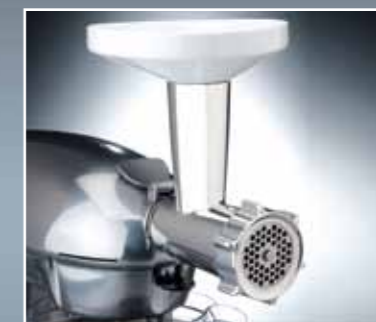


MINCER / COOKIE ATTACHMENT

- ✓ easy assembly of the attachment to the stand mixer
- ✓ metal housing and blade, aluminium feed screw and ring nut
- ✓ 2 grinding discs (4 mm and 7mm), 55 mm diameter
- ✓ including cookie attachment and canister with 2 litres volume, spanner for tighten and loosen of grinding discs

Technical Details:

Art.-No. 98101
Dimensions: W x D x H: 165 x 240 x 205 mm
Weight: 0.84 kg



VEGETABLE SHREDDER

- ✓ easy assembly of the attachment to the stand mixer
- ✓ housing with metal coupling and big feed chute with pusher
- ✓ including 4 different stainless steel insertions for coarse and fine vegetables grates or panes
- ✓ all parts are dishwasher safe

Technical Details:

Art.-No. 98102
Dimensions: W x D x H: 120 x 170 x 220 mm
Weight: 0.73 kg



ADDITIONAL STAINLESS STEEL BOWL

- ✓ stainless steel bowl with 6 litres volume and handle for safety hold
- ✓ dishwasher safe

Technical Details:

Art.-No. 96201
Dimensions: W x D x H: 247 x 273 x 175 mm
Weight: 0.7 kg



CLASSIC KITCHEN SCALE

- ✓ overall stainless steel 18/10, polished
- ✓ used as portion-scale for bakery, canteen kitchen or gastronomy
- ✓ good reading precision and easy setting
- ✓ weigh-mechanism is inured to thermal-impact
- ✓ retro design

Technical Details:

Art.-No. 30102
Dimensions: L x D x H: 140 x 210 x 250 mm
Weight: 1.4 kg
Range: 2 kg
Scaling: 10 g
Bowl: Ø 200 mm
Packaging Unit: 8 pcs



GASTROBACK HOME CULTURE

TESTURTEIL

Haus & Garten Test (2,1) gut
Gastrobäck Home Culture 40980
www.hausgarten-test.de

Lockerer Eischnee und gleichmäßig vermengter Kuchenteig



including dough hooks

HOME CULTURE HANDMIXER

- ✓ Inox Touch Surface
- ✓ ergonomical design, easy and comfortable handling
- ✓ 5 speeds and turbo function
- ✓ eject button
- ✓ included accessories: 2 stainless steel beaters and 2 dough hook

Technical Details:

Art.-No. 40980
 Dimensions: W x D x H: 150 x 90 x 195 mm
 Performance: 220 - 240 V / 50 - 60 Hz
 250 W
 Revolutions: 475 - 1,000 per minute
 Weight: 1.1 kg
 Packaging Unit: 6 pcs



DESIGN HAND BLENDER ADVANCED PRO

- ✓ high-performance hand blender (800 watts) incl. measuring pitcher, chopper attachment, whisk and a special attachment for mashed potatoes
- ✓ ergonomic Soft-Touch handle for a safe and comfortable application
- ✓ 5 speed levels infinitely adjustable
- ✓ LED Bluelight On button
- ✓ pitchers suitable for storing in the fridge
- ✓ measuring pitcher (800ml) with lid usable as anti-slip-basis, perfect for gravy, dips, baby food, shakes or smoothies
- ✓ chopper attachment (500ml) with lid usable as anti-slip-basis, e.g. Parmesan cheese, chocolate shavings;
- ✓ special attachment for mashed potatoes;
- ✓ whisk for whipping cream or beating eggs
- ✓ accessories and attachments are dishwasher safe

Technical Details:

Art.-No. 40975
 Dimensions: Ø x H: 65 x 400 mm
 Performance: 220 - 240 V / 50 - 60 Hz
 800 W
 Revolutions: 800 - 15,000 per minute (max.)
 Weight: ca. 0.97 kg
 Packaging Unit: 6 pcs



GASTROBACK®
ADVANCED PRODUKT



Attachment for pureeing

Special attachment for mashed potatoes

Whisk

Chopper attachment (500 ml)

measuring pitcher (800 ml)

GASTROBACK HOME CULTURE

TESTMAGAZIN-URTEIL
Gastrobäck Home Culture Handmixer Digital 40981
GUT 85,2 %
20 Handmixer im Vergleichstest | Heft 04/2011



including dough hooks

NEW with digital display

HOME CULTURE HANDMIXER DIGITAL

- ✓ with digital display
- ✓ 16 speeds and turbo function
- ✓ 300 watt motor
- ✓ Inox Touch Surface
- ✓ ergonomical design, easy and comfortable handling
- ✓ eject button
- ✓ included accessories: 2 stainless steel beaters and 2 dough hooks

Technical Details:

Art.-No. 40981
 Dimensions: W x D x H: 150 x 90 x 195 mm
 Performance: 220 - 240 V / 50 - 60 Hz
 300 W
 Revolutions: 475 - 1,000 per minute
 Weight: 1.1 kg
 Packaging Unit: 6 pcs



DESIGN HAND BLENDER ADVANCED

- ✓ High-performance hand blender (800 watts) incl. measuring pitcher, chopper attachment and whisk
- ✓ 10 speed levels + turbo
- ✓ stainless steel blender shaft for preparing hot and cold dishes
- ✓ measuring pitcher (800ml) with lid, perfect for gravy, dips, baby food, shakes or smoothies – suitable for storing in the fridge
- ✓ chopper attachment (500ml) with lid, for preparing freshly chopped ingredients – suitable for storing in the fridge
- ✓ lid usable as anti-slip-basis
- ✓ whisk for whipping cream or beating eggs, or light desserts
- ✓ including extensive accessories: Measuring pitcher with lid, chopper attachment with lid, whisk and wall mount

Technical Details:

Art.-No. 40974
 Dimensions: Ø x H: 55 x 405 mm
 Performance: 220 - 240 V / 50 - 60 Hz / 800 W
 Revolutions: 1,200 - 17,000 per minute (max.)
 Weight: ca. 0.94 kg
 Packaging Unit: 6 pcs



GASTROBACK®
ADVANCED PRODUKT



Easy to use with variable speed control and turbo button.

Stainless steel blender blades for effortless puree.

Puree soups with fresh ingredients in seconds.

Preparing Salsa, Mango Chutney or Chili sauce.

Fresh babyfood with ingredients of your choice.

Mix refreshing, fruity drinks and shakes.



HOME CULTURE HAND BLENDER

- ✓ ergonomically slender design
- ✓ Inox Touch Surface
- ✓ variable speed operation
- ✓ stainless steel blender shaft and blade
- ✓ accessories: whisk, measuring pitcher and wall mount

Technical Details:

Art.-No. 40970
 Dimensions: D x H: 65 x 380 mm
 Performance: 220 - 230 V / 50 - 60 Hz / 250 W
 Revolutions: blender: 14.000 - 17.500 per minute
 whisk: 980 - 1,350 per minute
 Weight: 0.8 kg
 Packaging Unit: 8 pcs



Included accessories: whisk, measuring pitcher and wall mount



TESTMAGAZIN - URTEIL
 Gastroback Power Stabmixer 40971
GUT 84,7 %
 In Test: 11 Stabmixer
 Testurteile: 1x sehr gut, 7x gut, 3x befriedigend
 Heft: 08/2011

EMPORIO URTEIL
 Gastroback Home Culture Power Stabmixer 40971
GUT 89,3 %
 7 Stabmixer im Vergleichstest
 Heft: 04/2008

HOME CULTURE POWER HAND BLENDER

- ✓ 600 watt Longlife Motor
- ✓ Inox Touch Surface
- ✓ ergonomically slender design
- ✓ variable speed operation
- ✓ stainless steel blender shaft and blade
- ✓ accessories: 1 liter non-slip plastic container with scaling

Technical Details:

Art.-No. 40971
 Dimensions: D x H: 65 x 405 mm
 Performance: 220 - 240 V / 50 - 60 Hz / 600 W
 Revolutions: 11,500 - 17,500 per minute
 Weight: 1.1 kg
 Packaging Unit: 6 pcs



variable speed level

incl. container with scaling

DESIGN FOOD PROCESSOR ADVANCED

- ✓ versatile and multifunctional chopper and multi-purpose food processor
- ✓ Chops and minces meat, fish, fruit, vegetable, nuts, onions, cheese, makes ice cream, soups, milkshakes and babyfood, mixes different sorts of dough and much more in seconds
- ✓ 3 different processing bowls included in delivery:
 - large processing bowl with purpose-built sealed drive enables the processing of a max capacity of 2 litre liquid food - ideal for making soups or milkshakes
 - special processing bowl with chute for processing large quantities of vegetables and fruit with immediate ejection into the food collector or other external container
 - additional mini processing bowl with small universal 's' blade for processing small quantities (i. e. garlic, parmesan or spices)
- ✓ wide range of accessories: special slicing blade with adjustable cutting thickness, shredding disc, grating and shaving disc, julienne disc, universal 's' blade, lid, food pusher and internal pusher with measuring function, food collector, spatula
- ✓ 1,100 watt induction motor
- ✓ On/Off button and pulse function
- ✓ very robust brushed metal die-cast housing
- ✓ all parts dishwasher safe

Technical Details:

Art.-No. 40965
 Dimensions: W x D x H: 325 x 295 x 445 mm
 Performance: 230 - 240 V / 50 - 60 Hz
 1,100 W
 Revolutions: 1,500 per minute
 Bowl: 2 litre volume
 Mini bowl: 675 ml volume
 Weight: 9 kg
 Packaging Unit: 1 pcs



specially sealed container coupling enables the processing of liquids up to max. 2 liters

practical compartment for extensive accessories

included accessories: special slicing blade with adjustable cutting thickness, shredding disc, grating and shaving disc, julienne disc, universal 's' blade, lid, food pusher and internal pusher with measuring function, food collector, spatula



Application examples for all Food Processors:



cucumber slices



minced meat



red cabbage grater



cheese grater



onion strips



bread dough



tomato soup



ice cream



DESIGN FOOD PROCESSOR S

- ✓ versatile quick chopper and multi-purpose food processor
- ✓ uses: Grate, slice and cut fruits, vegetables, nuts, onions, cheese
- ✓ make minced meat, batters and doughs, soups, milk shakes, ice cream and baby food
- ✓ practical compartment for extensive accessories
- ✓ ejections function for steady working
- ✓ soft-touch ON-/OFF button, pulse function and safety lock
- ✓ all parts are dishwasher safe
- ✓ included accessories: Universal stainless steel blade, grating disk, slicing disk, pusher, collection container and ejection disc

Technical Details:

Art.-No.	40963
Dimensions:	W x D x H: 165 x 198 x 360 mm
Performance:	230 - 240 V / 50 - 60 Hz / 450 - 500 W
Revolutions:	3500 per minute
Weight:	2.3 kg
Packaging Unit:	2 pcs

HOME CULTURE MINI CHOPPER

- ✓ versatile uses: cuts and chops fruit, vegetables, meat, fish and nuts inside of just a few seconds
- ✓ double stainless steel knife
- ✓ plastic housing with Inoxtouch surface
- ✓ easy to use
- ✓ 1 litre glass container with handles
- ✓ plastic lid as spray protection
- ✓ simple cleaning

Technical Details:

Art.-No.	40959
Dimensions:	W x D x H: 180 x 155 x 210 mm
Performance:	220 - 230 V / 50 - 60 Hz
	160 W
Revolutions:	4,500 per minute
Weight:	1.7 kg
Packaging Unit:	4 pcs



DESIGN FOOD PROCESSOR PRO

- ✓ versatile quick chopper and multi-purpose food processor
- ✓ uses: Grate, slice and cut fruits, vegetables, nuts, onions, cheese
- ✓ make minced meat, batters and doughs, soups, milk shakes, ice cream and baby food
- ✓ large container with specially sealed drive mechanism enables processing of fluids up to a maximum quantity of 1.5 litre
- ✓ additional mini-container with small universal stainless steel blade for processing small quantities (e.g. garlic, parmesan or spices)
- ✓ practical compartment for extensive accessories
- ✓ ON-/OFF button, pulse function
- ✓ included accessories: food pusher with measuring insert, variable stainless steel cutting disk, stainless steel grating disk, stainless steel grating and slicing disk (reversible), large universal stainless steel blade

Technical Details:

Art.-No.	40964
Dimensions:	W x D x H: 210 x 280 x 395 mm
Performance:	230 - 240 V / 50 - 60 Hz / 650 - 700 W
Revolutions:	1,500 per minute
Weight:	5.5 kg
Packaging Unit:	2 pcs

~ PROFESSIONAL ~

ELECTRIC SAUSAGE SLICER AUTOMATIC

- ✓ fully automated cutting of sausages
- ✓ automatic switch
- ✓ constructed of polished stainless steel
- ✓ stainless steel double sickle blade
- ✓ define thickness of sausage slices from 5-35 mm
- ✓ sausage slice ejection function
- ✓ safety switch
- ✓ extra large feed chute (Ø 48 mm)
- ✓ cover with feed chute and double sickle blade
- ✓ dishwasher safe

Technical Details:

Art.-No.	41404
Dimensions:	W x D x H: 185 x 225 x 330 mm
Performance:	230V / 50-60 Hz / 130 W
Weight:	6.5 kg
Packaging Unit:	2 pcs



Double sickle blades and spacers

automatic switch



~ PROFESSIONAL ~
ELECTRIC SAUSAGE SLICER

- ✓ cuts sausages automatically in seconds
- ✓ solid model made of stainless steel, polished
- ✓ with double sickle knife
- ✓ adjustment of slice thickness: 5 - 35 mm
- ✓ sausage slice ejection function
- ✓ safety switch
- ✓ cover with funnel and sickle knives, dishwasher safe

Technical Details:

Art.-No. 41399
 Dimensions: W x D x H: 185 x 225 x 330 mm
 Performance: 230V / 50-60 Hz / 130 W
 Weight: 6.6 kg
 Packaging Unit: 2 pcs

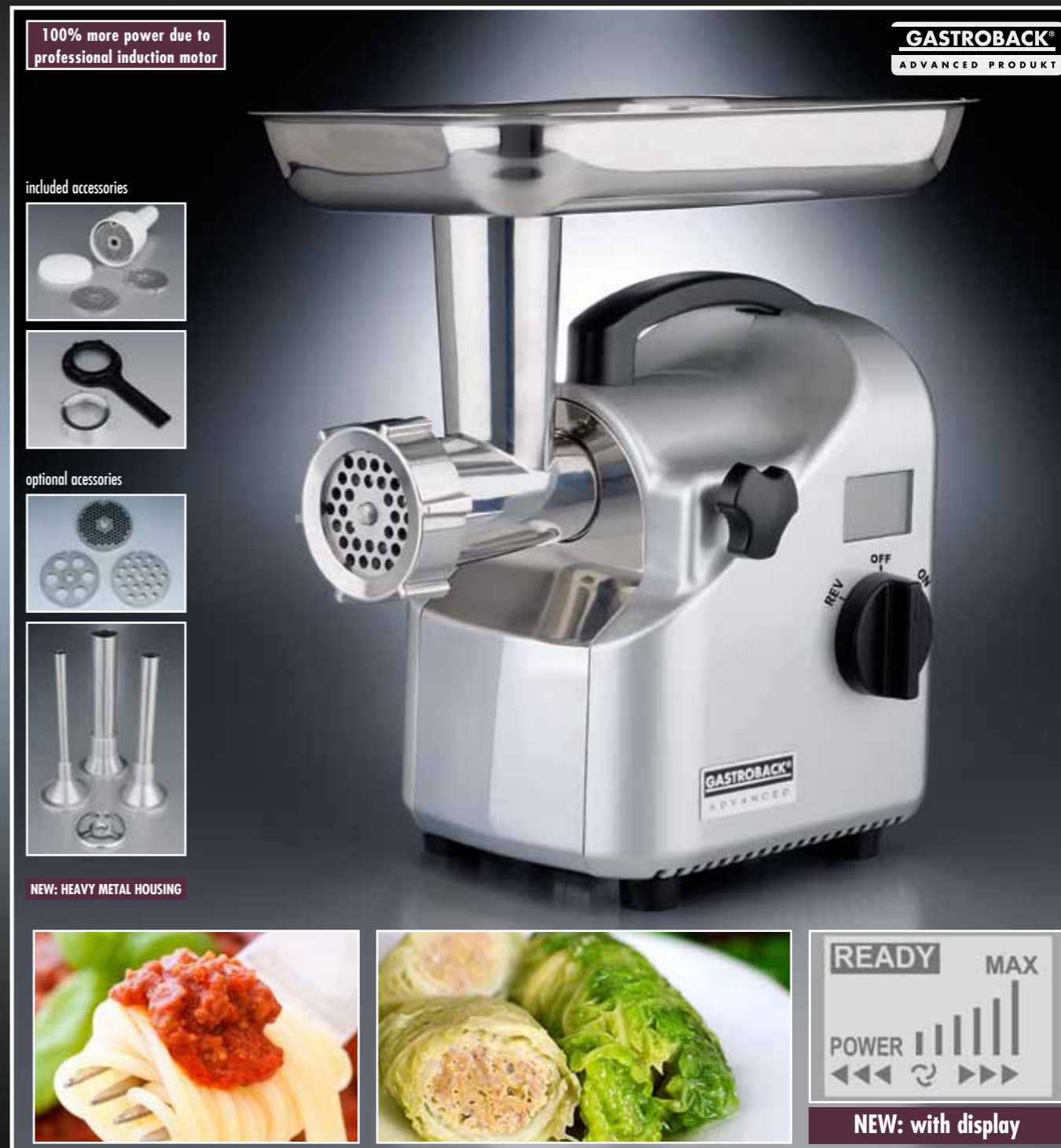


~ PROFESSIONAL ~
HAND SAUSAGE SLICER

- ✓ robust and easy to use
- ✓ housing made from chromium-nickel steel
- ✓ blades made from stainless steel
- ✓ manually operated slicing lever
- ✓ base plate with suction feet for high degree of stability
- ✓ flexible use
- ✓ space saving
- ✓ easy to clean
- ✓ slice thickness 17 mm
- ✓ portions 11 pieces
- ✓ working width 205 mm

Technical Details:

Art.-No. 41397
 Dimensions: W x D x H: 214 x 155 x 205 mm
 Weight: 3 kg
 Packaging Unit: 6 pcs



DESIGN MINCER ADVANCED
(STANDARD SIZE 8)

IDEAL FOR THE PROFESSIONAL CHEF

- ✓ hourly output approx. 100 kg
- ✓ professional motor (induction / 350 watt / max 1.3 Nm)
- ✓ digital display (indicating direction of rotation and power input)
- ✓ control switch: on/off switch and reverse function
- ✓ stainless steel crossed-blade knife with 4 blades
- ✓ grinding discs are made of cast metal (steel SUS 420)
- ✓ integrated handle
- ✓ large rotary feed pan is made of stainless steel
- ✓ worm housing, worm and closing ring is made of cast aluminium
- ✓ front panel is made of stainless steel

- ✓ accessories: 3 grinding discs (diameter 61 mm) with holes 2mm, 4.5 mm and 6 mm and spanner
- ✓ optional available accessories: 3 sausage filling attachments (Art.-No.: 96010) and additional set of grinding discs (3 mm, 8 mm and 14 mm; Art.-No.: 96011)

Technical Details:

Art.-No. 41409
 Dimensions: W x D x H: 325 x 223 x 362 mm
 Performance: 220 - 230 V / 50 - 60 Hz / 350 W max.
 Weight: 8 kg
 Packaging Unit: 1 pcs



DESIGN MINCER PRO M

- ✓ electronically regulated motor (2,000 watt max.)
- ✓ diecast aluminium housing
- ✓ illuminated sensor control panel - on/off switch and reverse function
- ✓ stainless steel crossed-blade knife with 4 blades
- ✓ feed pan and grinding discs made of stainless steel
- ✓ screw ring, worm housing and worm made of die cast aluminium
- ✓ accessories: 3 grinding discs (3 mm / 4.8 mm / 8 mm), kebbe attachment for oriental cuisine, sausage filling attachment and cookie attachment

Technical Details:

Art.-No. 41408
 Dimensions: W x D x H: 350 x 160 x 350 mm
 Performance: 220 - 240 V / 50 - 60 Hz
 Power: 600 W /
 Lockpower: 2,000 W max.
 Weight: 5.4 kg
 Packaging Unit: 2 pcs



DESIGN MINCER PLUS

- ✓ electronically regulated motor (1,500 Watt max.)
- ✓ worm housing made of cast metal
- ✓ stainless steel cross-blade knife with 4 blades
- ✓ LED-illuminated control panel
- ✓ on/off button and reverse
- ✓ grinding disc aperture: 50 mm
- ✓ 2 grinding discs (4 mm and 8 mm)
- ✓ accessories included: 2 grinding discs for chunky meat, sausage filing attachment, pusher, food tray, cookie attachment, Kebbe attachment for oriental cuisine

Technical Details:

Art.-No. 41403
 Dimensions: W x D x H: 220 x 168 x 377 mm
 Performance: 220 - 240 V / 50 - 60 Hz
 Power: 350 W /
 Lockpower: 1,500 Watt max.
 Weight: 3.15 kg
 Packaging Unit: 2 pcs



TESTMAGAZIN-URTEIL
 GASTROBACK Design Fleischwolf Plus 41403
GUT 91,8 %
 Im Test: 9 Fleischwölfe
 Testurteile: 1x sehr gut, 6x gut,
 2x befriedigend
 Heft 11/2012



stainless steel cross blade with 4 blades

worm housing made of cast metal

included accessories



TESTURTEIL
Haus & Garten Test
 (1,5) gut
 Gastroback
 Design Fleischwolf Electronic Pro
 www.hausgarten-test.de
 Hochwertiger Fleischwolf,
 einfach zu bedienen

DESIGN MINCER ELECTRONIC PRO

- ✓ electronically regulated motor with display indicating (performance 1,000 watt max.) operating time and motor temperature
- ✓ illuminated sensor control panel - on/off switch and reverse function
- ✓ stainless steel crossed-blade knife with 4 blades
- ✓ feed pan and grinding discs made of stainless steel
- ✓ screw ring, worm housing and worm made of cast metal
- ✓ Accessories: 3 grinding discs (diameter 61 mm) with holes 3 mm, 4.8 mm and 8 mm, kebbe attachment for Oriental cuisine, sausage filling attachment and cookie attachment

Technical Details:

Art.-No. 41406
 Dimensions: W x D x H: 350 x 188 x 385 mm
 Performance: 230 V / 50 - 60 Hz
 Power: 500 W /
 Lockpower: 1,000 W max.
 Weight: 4.38 kg
 Packaging Unit: 2 pcs



digital display

included accessories

MINCER PRO

- ✓ stainless steel rough-cutter with 4 blades
- ✓ attachment and feeding bowl made of aluminium
- ✓ forward and reverse function
- ✓ stainless steel front panel
- ✓ kebbe attachment for Oriental cuisine
- ✓ 3 sausage filling attachments
- ✓ grinding discs diameter 69 mm
- ✓ 3 perforated discs with holes 3.5, 5 and 8.0 mm
- ✓ 1,000 W max.

Technical Details:

Art.-No. 41402
 Dimensions: B x T x H: 410 x 165 x 360 mm
 Performance: 220 - 240 V / 50 - 60 Hz
 Power: 350 W /
 Lockpower: 1,000 W max.
 Weight: 6 kg
 Packaging Unit: 2 pcs



included accessories





GASTROBACK
ADVANCED PRODUKT

TESTURTEIL
Haus & Garten Test (1,4) **sehr gut**
Gastroback Design Pro Vakuumierer
www.hausgarten-test.de
Exzellente Versiegelungsqualität, edel verarbeitet

operating menu



DESIGN PRO VACUUM SEALER

TWO OPERATING MODES: FULLY AUTOMATIC OR MANUAL

- ✓ air out - freshness in; the vacuum delays the oxidation of the food
- ✓ vacuum sealed the durability of the food is 5 times as long as without vacuum
- ✓ vacuum preserves the natural ingredients, minerals and vitamins
- ✓ vacuum protects frozen food from freezer burn and remains its natural colour
- ✓ suitable for low pressure marinating
- ✓ hose connection for vacuuming in storage containers
- ✓ control lamp / vacuuming 100 / 500 mm Hg / 0.6 bar
- ✓ accessories: 1 roll of plastic foil

Technical Details:

Art.-No. 46011
Dimensions: W x D x H: 370 x 150 x 80 mm
Performance: 220 V / 50 - 60 Hz / 120 W
Weight: 2.3 kg
Packaging Unit: 2 pcs

vacuuming with vacuum sealer bags



VACUUM SEALER BAGS

- ✓ suitable for Design Vacuum Sealer 46007, 46010 and 46011
- ✓ 50 bags – for long-lasting freshness
- ✓ robust and extremely hard-wearing
- ✓ boil-proof (up to max. 70 °C)
- ✓ non-ageing, heat resistant and food safe

Art.-No. 46115 46119
Vacuum Sealer Bags Set 200 Vacuum Sealer Bags Set 250
Dimensions: 20 x 30 cm 25 x 40 cm
Packaging Unit: 1 set with 50 pcs 1 set with 50 pcs



incl. cutting device

operating menu



DESIGN VACUUM SEALER PLUS

ONE OPERATING MODE: FULLY AUTOMATIC

- ✓ integrated cutter for bag rolls
- ✓ automatically vacuums and seals the bags
- ✓ air out - freshness in; the vacuum delays the oxidation of the food; vacuum sealed the durability of the food is 5 times as long as without vacuum
- ✓ natural ingredients, minerals and vitamins are preserved
- ✓ frozen food keeps its natural colour and is protected from freezer burn
- ✓ manual »Stop« function for processing delicate edibles
- ✓ vacuums 111 p. m.
- ✓ control lamps / vacuuming 526 mm Hg / 0.7 bar
- ✓ max. bag width: 30 cm

- ✓ detachable vacuum chamber for easy cleaning
- ✓ accessories: vacuum adapter hose for vacuuming container, 5 goffered bags (20 x 30 cm), 5 goffered bags (30 x 40 cm)
- ✓ suitable for low pressure marinating
- ✓ optional accessories: vacuum containers, rolls and bags

Technical Details:

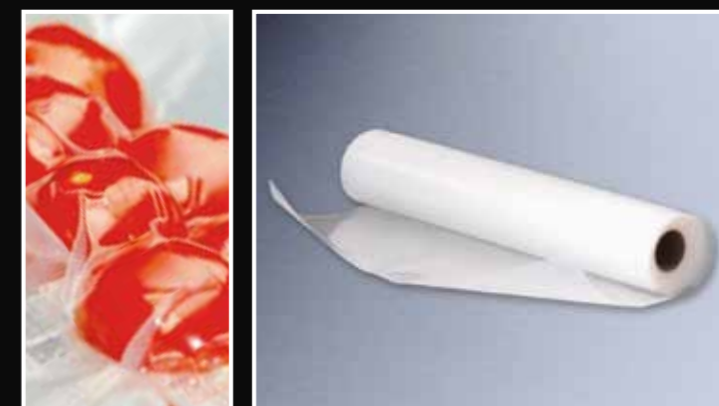
Art.-No. 46007
Dimensions: B x T x H: 390 x 165 x 95 mm
Performance: 220 - 240 V / 50 - 60 Hz / 170 Watt
Weight: 1.6 kg
Packaging Unit: 4 pcs

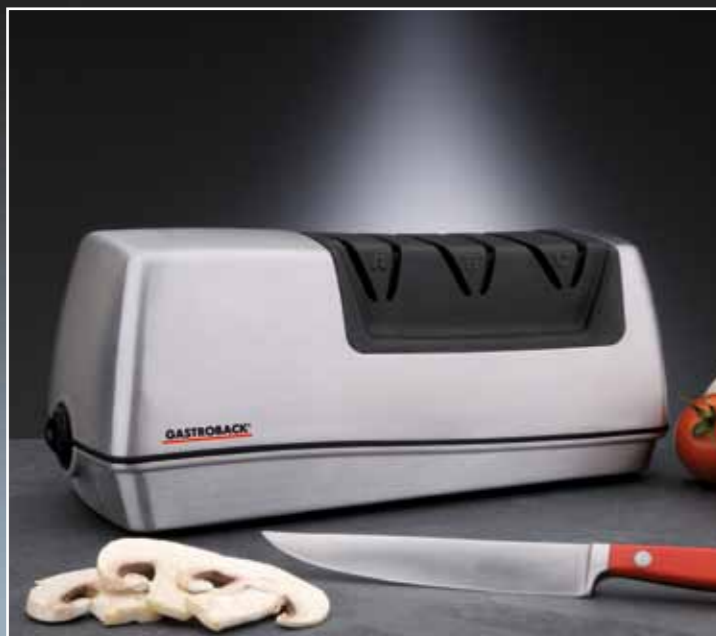


VACUUM SEALER ROLLS

- ✓ suitable for Design Vacuum Sealer 46007, 46010 und 46011
- ✓ 2 special rolls – for long-lasting freshness

Art.-No. 46100 46101
Folienrollenset 100 Folienrollenset 101
Maße: 20 x 600 cm 28 x 600 cm
Verpackungseinheit: 18 Sets





DESIGN KNIFE SHARPENER

- ✓ 3-phase sharpening process
- ✓ 2 diamond sharpening wheels with precise angular guide for pre-sharpening and sharpening
- ✓ ultra-fine sharpening by honing/polishing disk
- ✓ suitable for all household, sports & leisure and industrial knives with smooth blade and scalloped or serrated edge
- ✓ magnet system catches the sharpening dust
- ✓ slow-turning sharpening disks prevent overheating and loss of blade hardness
- ✓ brushed metal housing
- ✓ non-slip rubber feet
- ✓ on/off switch

Technical Details:

Art.-No. 41620
 Dimensions: W x D x H: 260 x 130 x 110 mm
 Performance: 220 - 240 V / 50 - 60 Hz / 65 W
 Weight: 2.2 kg
 Packaging Unit: 6 pcs



HOME CULTURE DESIGN ELECTRIC KNIFE

- ✓ convenient and simple cutting of meat, fish, vegetables, bread, pastries, etc. in a few seconds
- ✓ Inox touch housing, rubber coated handle for a safe and firm hold
- ✓ ergonomic slimline design to fit hand
- ✓ with two blade-sets: wavy blade and universal blade
- ✓ two-side button for safe removal of blades
- ✓ including natural wooden stand with cabel take-up

Technical Details:

Art.-No. 41600
 Dimensions: W x Ø: 435 x 51 mm
 Dimensions wooden stand: W x D x H: 160 x 205 x 270 mm
 Performance: 220 - 240 V / 50 - 60 Hz / 120 W
 Weight: 1.56 kg
 Packaging Unit: 8 pcs



HANDHELD VACUUM CLEANER

- ✓ handheld vacuum cleaner utilizing powerful 800 W
- ✓ especially handy, flexible allround usage
- ✓ 3 brushes, flexible hose, carrying belt and floor attachment
- ✓ washable dust filter / no paper filter needed

Technical Details:

Art.-No. 45001
 Dimensions: L x D x H: 290 x 140 x 175 mm
 Performance: 220 - 240 V / 50 - 60 Hz / 800 W
 Weight: 1.4 kg
 Packaging Unit: 6 pcs



included accessories



versatile use



for the household



for the workshop



for the car

GASTROBACK®

visit our homepage:
www.gastroback.de

GASTROBACK®

Search...

Homepage Retailer Service Contact Representations Downloads FAQ Fairs Career Press

Home

Products

NOVELTIES

Espresso / Coffee / Milk Froth

Entsafter & Zitruspresse

Mix & Crush

Cooking / Baking / Barbecue

Waffle Iron/Crep Maker

Mincer

Kettle

Toaster

Vacuum Sealer

Valued Assistant

Gastro Profi

Newsletter

Name

E-mail

Subscribe

Our latest catalogues. Click here to **Download**

TESTSIEGER

TESTMAGAZIN - URTEIL

Gastroback G428 Gourmet Tea Advanced Automatic

SEHR GUT 96,7 %

Im Test: 7 Testkriterien

Insbesondere: 10 sehr gut, 80 gut, 10 befriedigend

seit 11/2013

Smoothies

Neu: Unsere Smoothie und Fruchtsaft Seite

Probieren Sie unsere leckeren Rezepte oder teilen Sie Ihre eigenen Rezepte mit anderen Smoothie Fans.

Melden Sie sich gleich an.

Hier geht es zu den Rezepten >>>>

Kaffeewelt

00:00 00:31

About Gastroback Imprint Terms and Conditions Catalogue privacy statement

- SPECIAL SITES ABOUT COFFEE, TEA AND SMOOTHIES
- MANY RECIPES AND TIPS
- OVERVIEW OVER THE PRODUCT RANGE
- DOWNLOADS

GASTROBACK GmbH

Gewerbestraße 20 · 21279 Hollenstedt / Germany
Telephone 0049 (0) 41 65 / 22 25-0 · Telefax 0049 (0) 41 65 / 22 25-29
E-Mail: info@gastroback.de
www.gastroback.de

Status: September 2014

Models and accessories subject to change
Pictures: Gastroback, AK, Shutterstock, Fotolia